



# Museum – for All

Finnish National Gallery

Erica Othman





# Museum – for All?

Finnish National Gallery  
Erica Othman




# FINNISH NATIONAL GALLERY

Art and creativity are essential for wellbeing



FINNISH NATIONAL GALLERY





# THREE MUSEUMS





Ateneum Art Museum

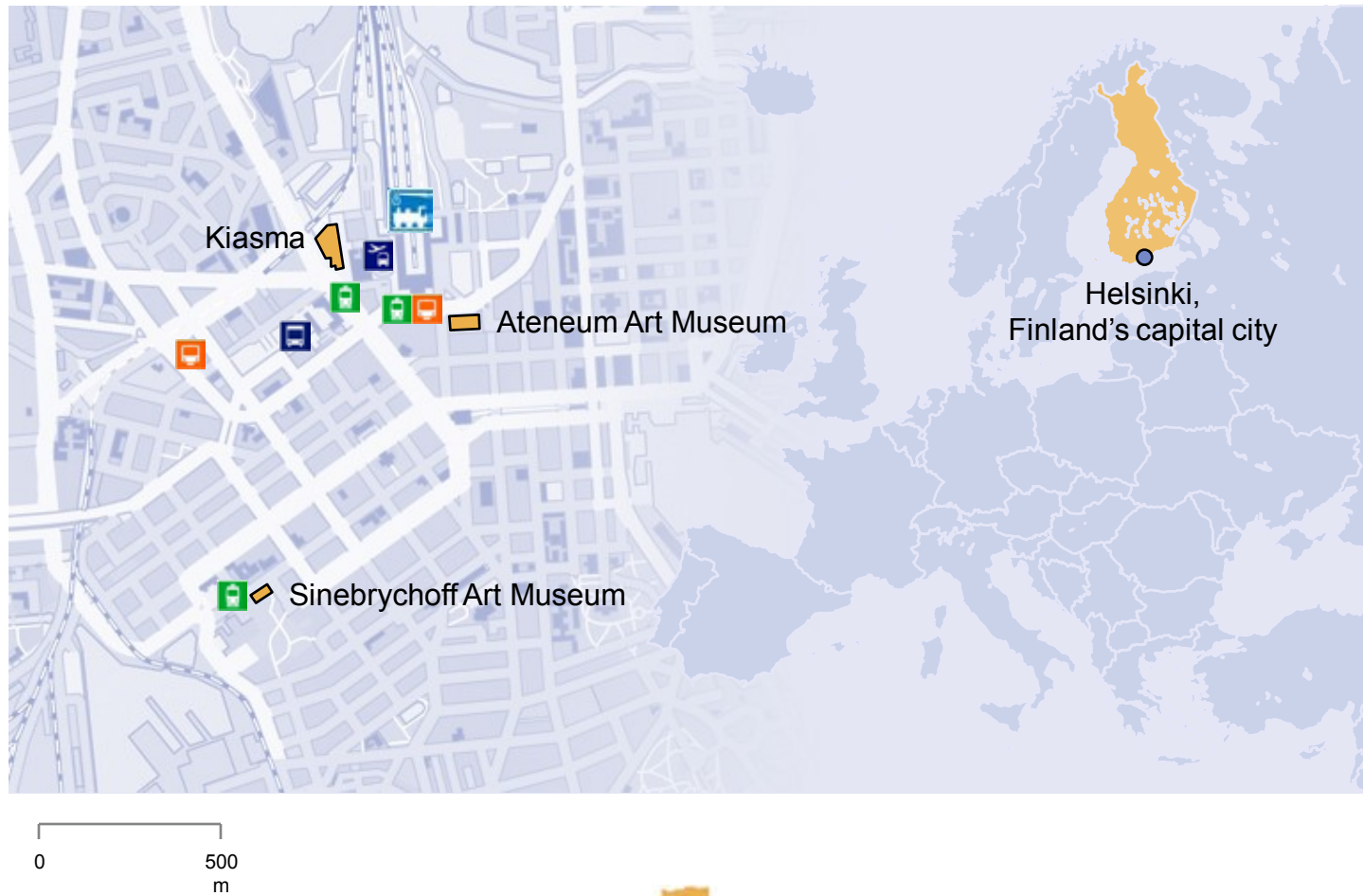


Museum of  
Contemporary Art  
Kiasma



Sinebrychoff Art Museum

# On the Map



FINNISH NATIONAL GALLERY

# The museums' operational strategy

- collections
- exhibitions
- art and museum education
  - publications
- related programme
- visitor services





# Ateneum Art Museum

Finnish national art collections



FINNISH NATIONAL GALLERY



# Kiasma

Centre for contemporary art and visual culture



FINNISH NATIONAL GALLERY

# Sinebrychoff Art Museum

Link to the traditions of European art and antiquities



FINNISH NATIONAL GALLERY



# THREE COLLECTIONS



# Finnish National Gallery

preserves



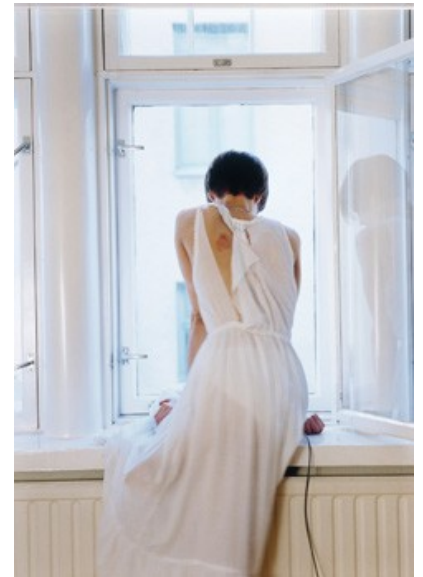
expands



administers



publicises



the most important art collection in Finland



FINNISH NATIONAL GALLERY

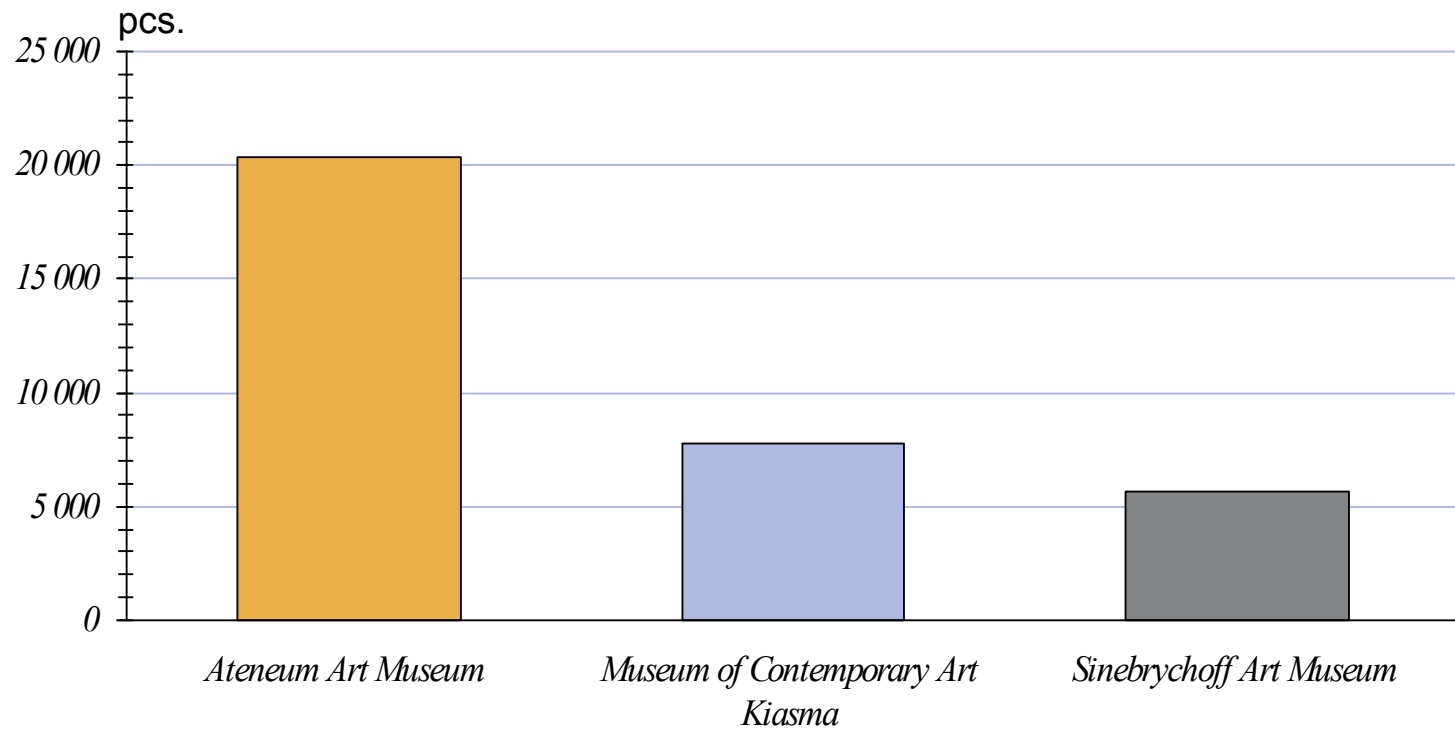
# Collections

- Finnish and foreign art
- from the turn of the 14th century to the present day
  - nearly 34,000 works of art
    - nearly 9,000 paintings
  - more than 1,300 sculptures

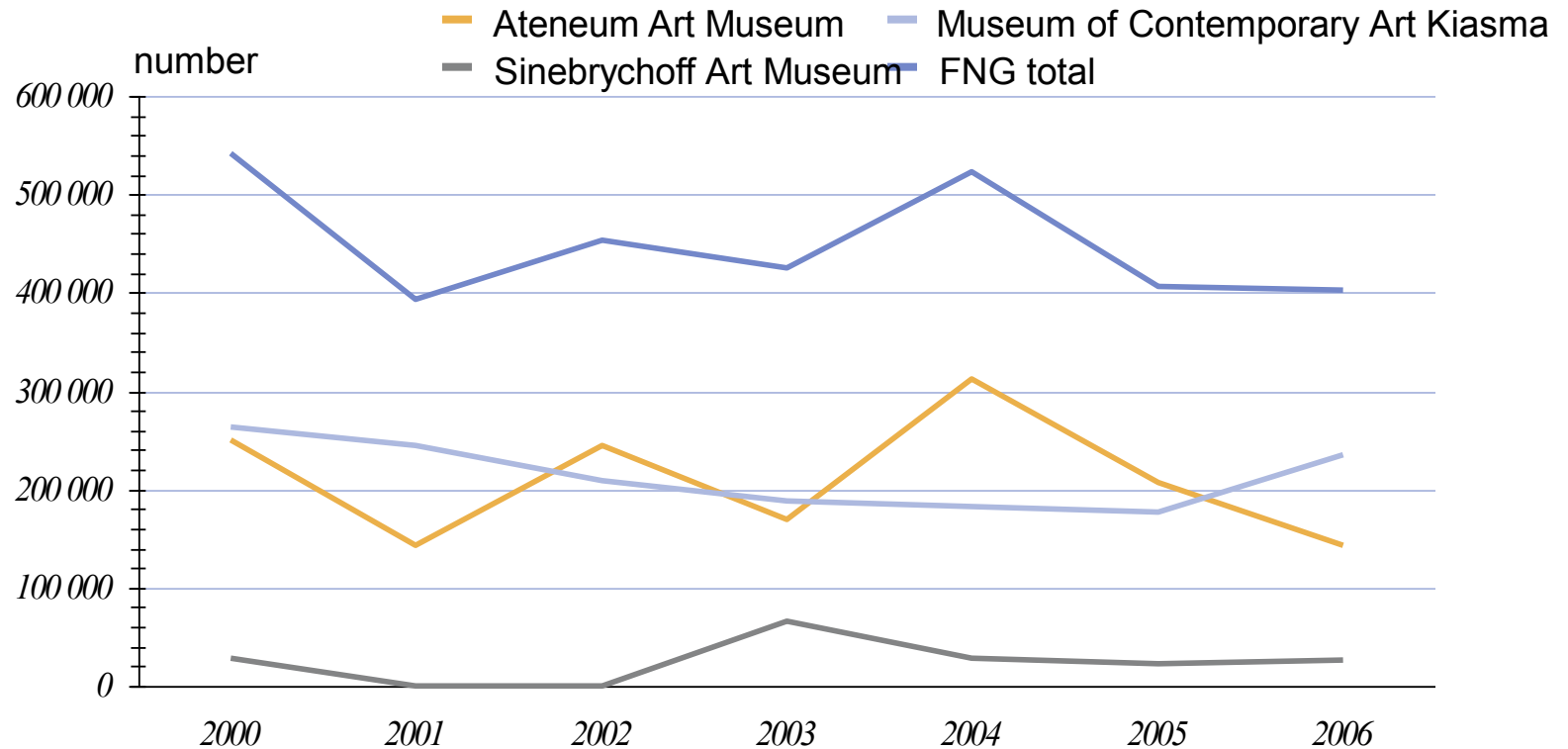


# Distribution of art collections

## Works of art per museum in 2006



# Visitors 2000–2006





# KEHYS

Art Museum Development Department



FINNISH NATIONAL GALLERY

# Functions of KEHYS (= frame)

- national development projects
- internal development of the FNG
- research, reports, recommendations and advice



Kulttuuria kaikille  
Kultur för alla  
*Culture for All*



FINNISH NATIONAL GALLERY



Expert advice and counselling.

Training.

Surveys of facilities and services.

[sari.salovaara@fng.fi](mailto:sari.salovaara@fng.fi)

The DVD Open doors is free of charge Subscriptions from outside Finland: **[tapani.sainio@nba.fi](mailto:tapani.sainio@nba.fi)**  
More information on the ACCU project: [www.accessculture.org](http://www.accessculture.org).

[www.cultureforall.info](http://www.cultureforall.info)



FINNISH NATIONAL GALLERY

# Accessible for All?



FINNISH NATIONAL GALLERY

# Culture for All?



FINNISH NATIONAL GALLERY

# Design for All?



FINNISH NATIONAL GALLERY



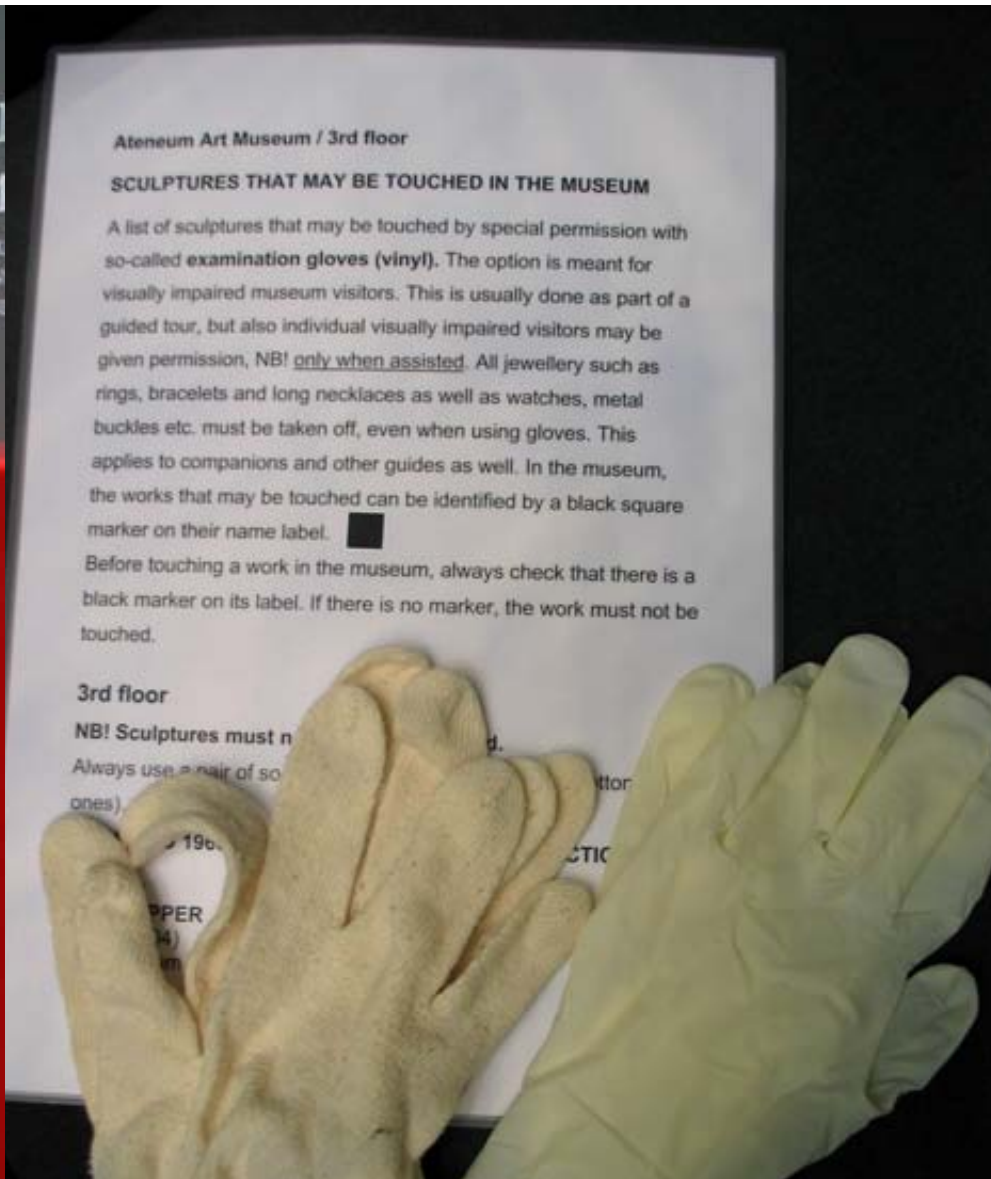
# Information for All?



FINNISH NATIONAL GALLERY



# Information for All?



# Museum for All?



PUUTTUVIEN TEOSTEN SALI  
SAL FÖR SAKNADE VERK  
ROOM FOR MISSING WORKS

*Rantala & Saloranta Interventions*



FINNISH NATIONAL GALLERY

# What is accessibility?

- Attitudes

Do we make new visitor groups welcome?  
Are staff members open-minded about diversity?

- Physical accessibility

Is our building physically accessible?

- Sensory access

Have the various ways that people use their senses been taken into account in our exhibitions, events and other services

- Intellectual access

Can people gain new experiences and information from our offerings, even if they have no previous knowledge of the subject?  
Have varied types of learning been considered?



- **Accessible communication**

Does our information reach new visitor groups effectively?  
Do we provide information in several alternative ways?

- **Social and cultural access**

Do our exhibitions, performances and other events reflect the interests and life experiences of our various target groups?

- **Financial access**

Are entrance fees reasonable?  
Are there free events?  
Do our shop and café sell products that, a family can afford?

- **Policies and action plans**

Do our policies and action plans reflect our willingness to work to improve accessibility?



- **Accessible communication**

Does our information reach new visitor groups effectively?  
Do we provide information in several alternative ways?

- **Social and cultural access**

Do our exhibitions, performances and other events reflect the interests and life experiences of our various target groups?

- **Financial access**

Are entrance fees reasonable?  
Are there free events?  
Do our shop and café sell products that, a family can afford?

- **Policies and action plans**

Do our policies and action plans reflect our willingness to work to improve accessibility?



Access-related guidance and support  
to providers of cultural services

[www.cultureforall.info](http://www.cultureforall.info)



Kulttuurikaikille  
Kultur för alla  
*Culture for All*



# SINEBRYCHOFF



## **DRAMA**

- PLAYS
- STORY TELLING
- TOUCHING
- DESCRIBING

leena.hannula@fng.fi



FINNISH NATIONAL GALLERY





# INVISIBLE TO VISIBLE



FINNISH NATIONAL GALLERY

# HANDS ON – MINDS ON



FINNISH NATIONAL GALLERY

# EXPERIMENTAL GUIDED TOURS



FINNISH NATIONAL GALLERY



# HISTORICAL ROLE PLAYS



FINNISH NATIONAL GALLERY

# KIASMA

Kiasma's Kid weeks 2-12 October 2007 - activities for babies and families



"Babies play with colour"



FINNISH NATIONAL GALLERY













[www.kiasma.fi](http://www.kiasma.fi)  
minna.raitmaa@kiasma.fi



FINNISH NATIONAL GALLERY

# ATENEUM

## Museum of Memories – a project for the elderly and their nurses 2004-2005



FINNISH NATIONAL GALLERY

# ATENEUM

## Museum of Memories – a project for the elderly and their nurses 2004-2005





# ATENEUM

## Museum of Memories – a project for the elderly and their nurses 2004-2005





# ATENEUM


## Museum of Senses – project 2006



DVD guide Open Doors –  
Making Cultural Heritage Sites and  
Exhibitions Accessible  
2007



FINNISH NATIONAL GALLERY



The DVD Open doors is free of charge  
Subscriptions from outside Finland:


**Mr Tapani Sainio**

**tapani.sainio@nba.fi**

More information on the ACCU project:  
**[www.accessculture.org](http://www.accessculture.org)**



FINNISH NATIONAL GALLERY



# ATENEUM

Touching the world of colours -workshop  
january 2007













Kulttuuria kaikille  
Kultur för alla  
*Culture for All*

Join the E-mail list!  
[www.cultureforall.info](http://www.cultureforall.info)



FINNISH NATIONAL GALLERY





Age of the Animal -exhibition in Ateneum spring 2007



FINNISH NATIONAL GALLERY













